

MONTHLY MEMBERSHIP PROGRESS REPORT

District 325 C

Results as of: 1/31/2024

GMT:

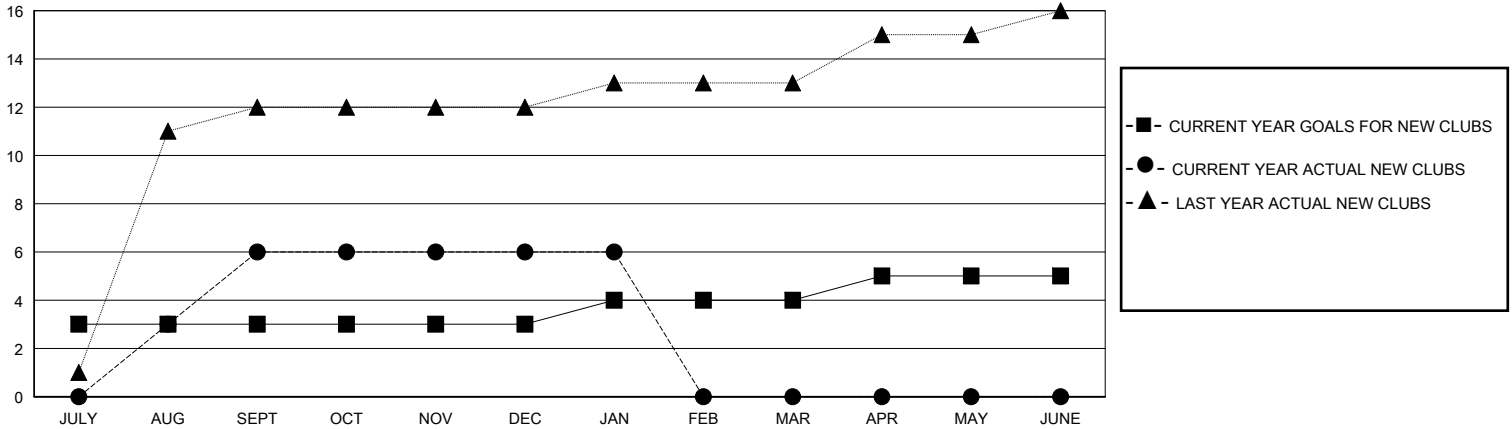
LOCATION NEPAL

GMT CA

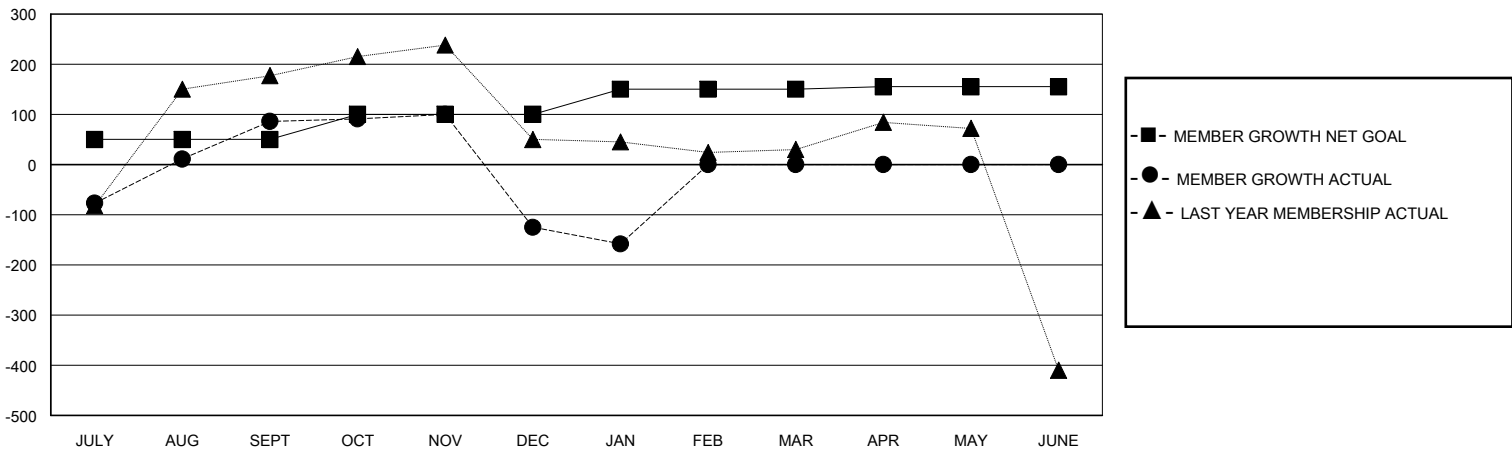
Clubs			
RESULTS FOR 2023-2024			
QUARTER	NEW CLUB GOAL	NEW CLUBS	DROPPED CLUBS
JULY/AUG/SEPT	3	6	2
OCT/NOV/DEC	0	0	8
JAN/FEB/MAR	1	0	3
APR/MAY/JUNE	1	0	0

Members			
RESULTS FOR 2023-2024			
QUARTER	MEMBER GROWTH NET GOAL	MEMBER GROWTH ACTUAL	DROPPED MEMBERS ACTUAL (including transfers)
JULY/AUG/SEPT	50	289	183
OCT/NOV/DEC	50	80	287
JAN/FEB/MAR	50	65	74
APR/MAY/JUNE	5	0	0

GOALS AND ACTUAL NEW CLUBS CUMULATIVE



GOALS AND ACTUAL MEMBERS CUMULATIVE



DROPPED CLUBS: 13	74 CLUBS OF 164 ADDED 1 OR MORE NEW MEMBERS	GENDER DISTRIBUTION	
		MALE 2,419 (72.43%)	FEMALE 919 (27.51%)
DROPPED MEMBERS		CLICK HERE FOR CUMULATIVE MEMBERSHIP DATA	TOTAL FAMILY UNIT MEMBERS 1,971
DECEASED 2	CLUB CANCELLED 175		FAMILY MEMBERS PAYING HALF DUES 1,371
OTHER 367	TOTAL 544		